

A woman in a military-style uniform and beret is giving a thumbs up. The background is a blurred scene with a Star Wars character. The text is overlaid on the right side of the image.

# WRAP UP

LAUREN HOPKINS

INC BOOTCAMP

05/27/2022

$$F(0, 0) = [11, 102, 35]$$



Color Image



Channel 1  
Red Intensity  
Values

Channel 2  
Green Intensity  
Values

Channel 3  
Blue Intensity  
Values

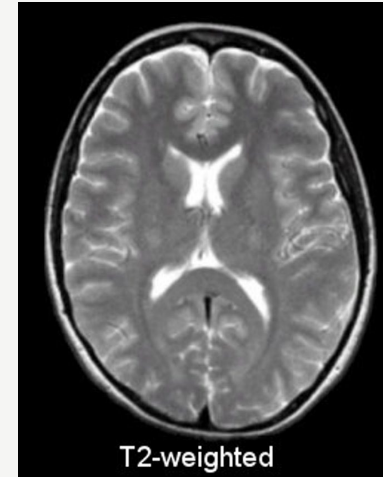
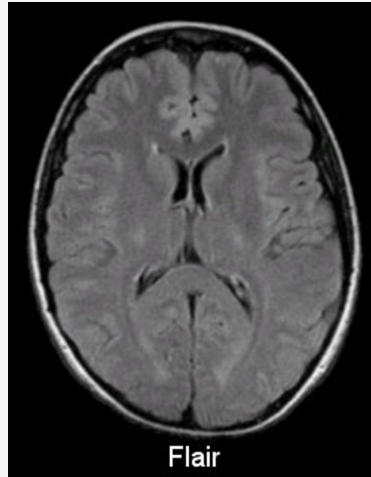
RGB Channels

11	158	156	158	158	...
159	159	157	159	159	...
149	151	155	158	159	...
146	146	149	153	158	...
145	143	143	148	158	...
...	...	...	...	...	...

102	169	167	169	169	...
170	170	168	170	170	...
160	162	165	169	170	...
150	152	165	169	170	...
...	...	...	...	...	...

35	165	163	165	165	...
166	166	164	166	166	...
156	158	162	165	166	...

IMAGING IS JUST  
MANIPULATING  
NUMBERS

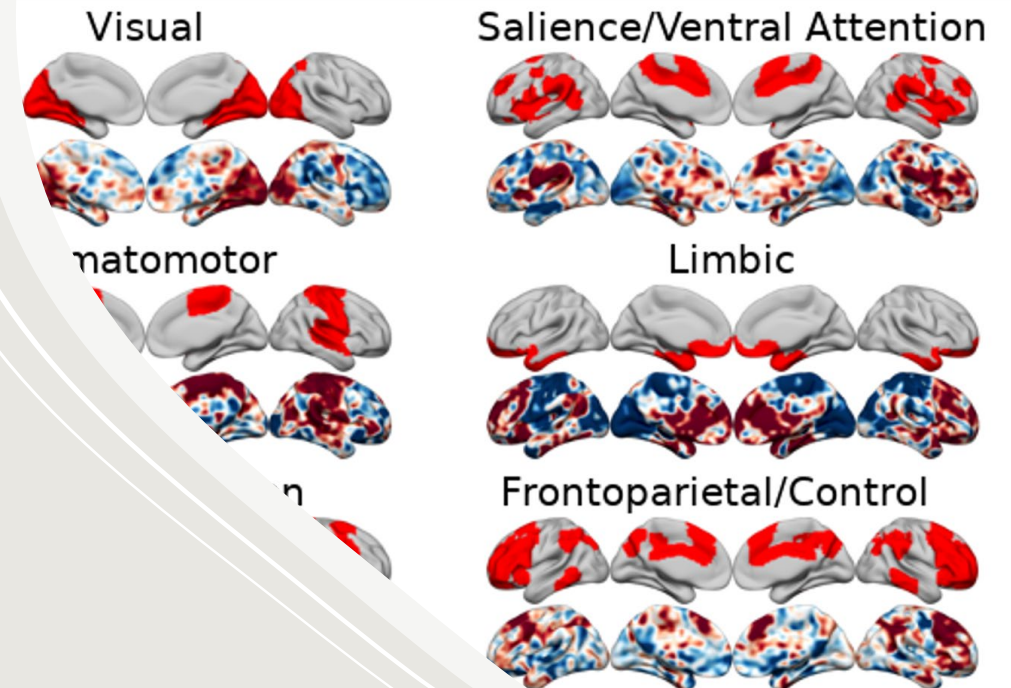
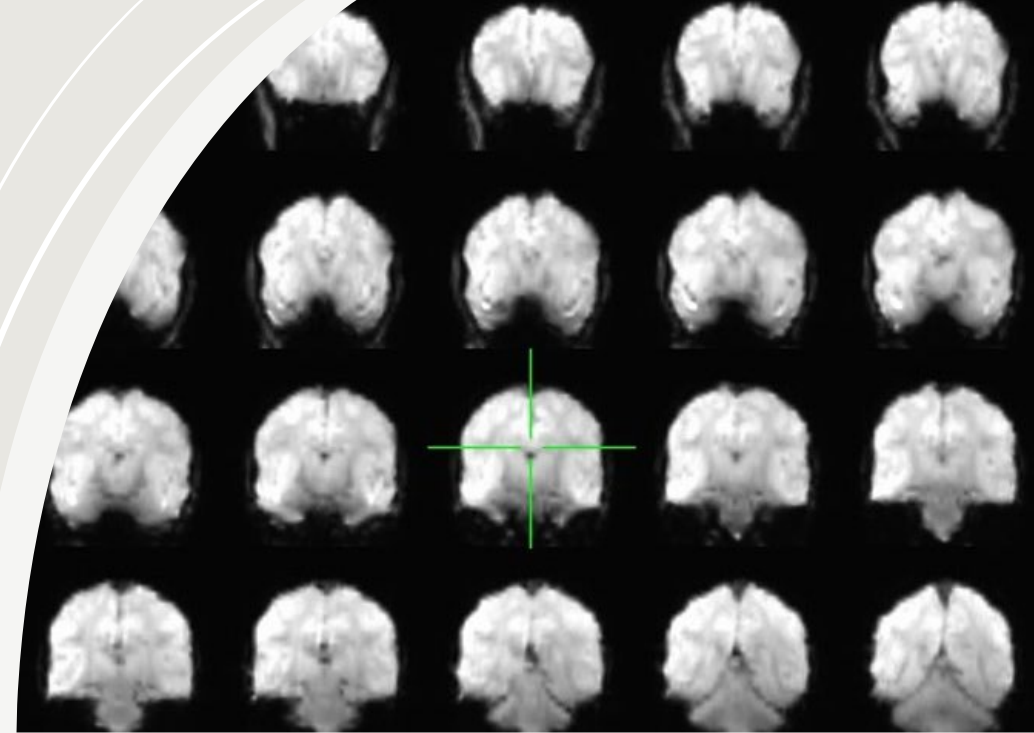


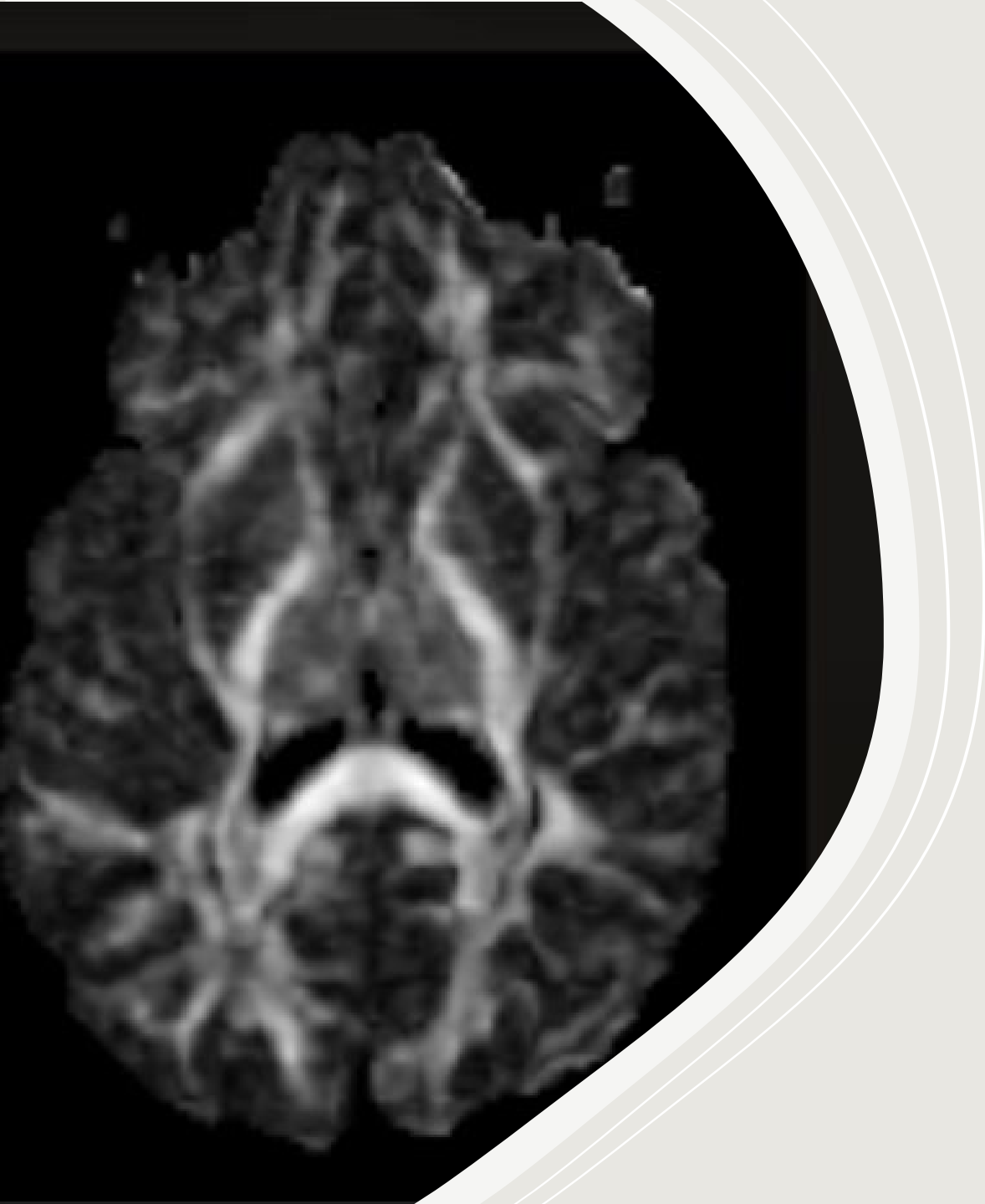
# ANATOMICAL IMAGING



# FUNCTIONAL IMAGING

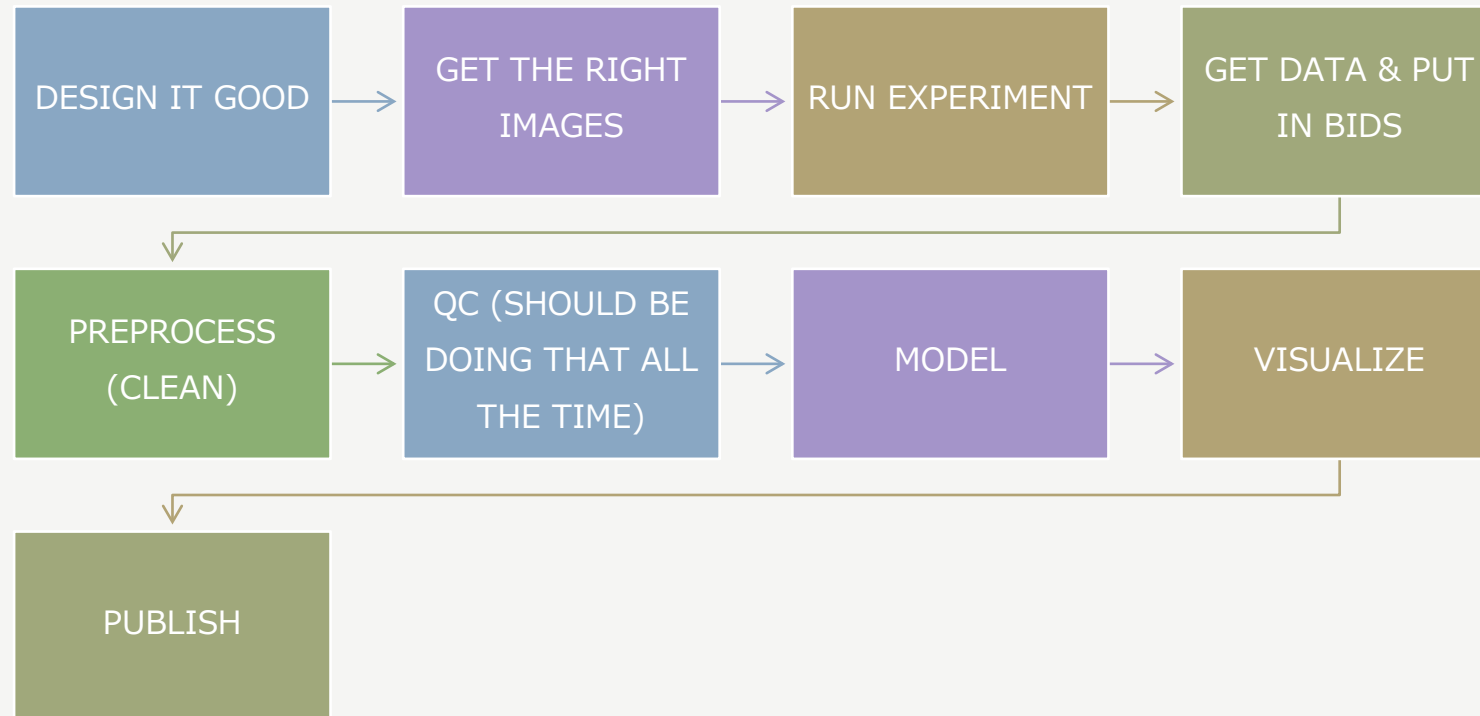
- Networks
- Regional task activity





**DWI**

# STEPS FOR ANY(?) IMAGING STUDY



# LEARN TO CODE

---

- ALL PROCESSING STEPS AND STATISTICS ARE DONE BY CODE
- START ASAP





# GENERAL Q&A

GO NUTS